

# Behavioral Health and Criminal Justice Document Repository- November 2021 Update

## Summary

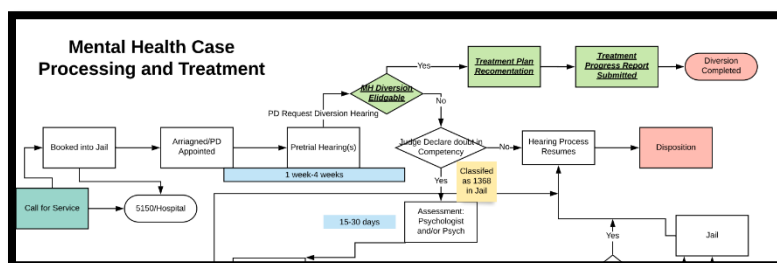
As part of the Data Driven Recovery Project (DDRP), a document repository has been created to help connect counties to operational and policy resources. This repository is a web-based location for users to access a range of documents including policies and procedures, program templates, forms, sample grant applications, legal documents, and program guides. While the DDRP is in the developmental phase of creating this tool, the initial focus is on behavioral health programs for those who are involved in the criminal justice system.

## Accessibility

**Adding Documents:** Users are encouraged to use [this LINK](#). to add documents to the repository. As users add documents, questions are asked to help categorize the documents for later searches, and the more documents that are shared, the more robust the repository becomes.

**Searching the Repository:** To search and download documents from the repository use [this LINK](#). To increase the accessibility of these documents, users can do key word searches to find documents associated with the key word provided. For example, if a user searched "Mental Health Court," they will find program guides, forms and templates associated with Mental Health Court. These would provide helpful resources for counties looking to add or grow their existing Mental Health Court program and while many of the documents are county specific, they can usually be easily modified to meet the needs of another county.

- **Providing an additional way to search:** In the future, a second approach for searching documents may include



searchable justice or behavioral process flow charts that would help users choose the most relevant document to the part of a process they are interested in. For example, there may be 20 steps in a process to move

someone through to a diversion program, so the user would click on a specialized flow chart where documents are available in underlined text and be taken to the actual document. See [figure 2](#).

- **Reaching additional audiences:** While the initial focus is on providing resources for Behavioral Health staff, over time, additional audiences may include staff from Probation, the Public Defender's Office, the Sheriff's Office, the District Attorney's Office, County Administration and Court staff.